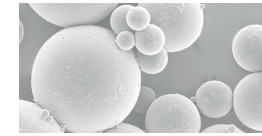
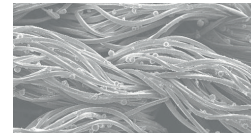
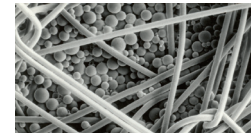
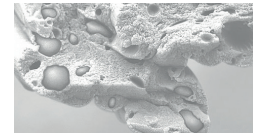
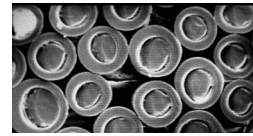
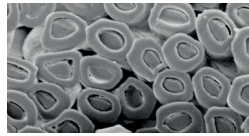


PROCESSES OVERVIEW

Feeling just right.



	Outlast® polyester fiber	Outlast® acrylic fiber	Outlast® viscose fiber	Outlast® coating	Outlast® MIC	fresh2SKIN®
Process	Fiber with Outlast® Temperature Regulation	Fiber with Outlast® Temperature Regulation	Fiber with Outlast® Temperature Regulation	Coated/printed Outlast® Temperature Regulation materials	Application process where an advanced formulation of Outlast® Temperature Regulation is printed onto flat fabric	Cooling technology can be applied via an dipping bath. The skin's cold receptors react to the contained menthol and create a pleasantly cool feeling. The temperature is regulated by natural wax capsules.
Placement	Products next to skin	Products next to skin	Products next to skin	Products close to skin	Products next to skin	Products next to skin
Product in the textile chain	Fibers and yarns	Fibers and yarns	Fibers and yarns	Fabrics	Fabrics	Finish
Suited for	<ul style="list-style-type: none"> • Knitwear • Socks • T-shirt/polo shirts • Shirts/blouses • Dresses • Sleepwear • Underwear/base layer • Trousers • Bed linen • Workwear/uniforms 	<ul style="list-style-type: none"> • Knitwear • Socks • Blankets • Base layer • Accessories (beanies, knitted gloves, etc.) 	<ul style="list-style-type: none"> • T-shirts/polo shirts • Shirts/blouses • Dresses • Sleepwear • Underwear/base layer • Bed linen • Mattress ticking • Workwear/uniforms 	<ul style="list-style-type: none"> • Multi-layer products (e.g. jacket linings) • Apparel, accessories (jackets, gloves, hats, etc.) • Shoes • Bedding products (duvets, pillows, mattress pads, mattresses) • Seating 	<ul style="list-style-type: none"> • T-shirts/polo shirts • Casual shirts • Sleepwear • Underwear • Bed linen • Mattress ticking 	<ul style="list-style-type: none"> • Knitwear • Socks • T-shirt/polo shirts • Shirts/blouses • Dresses • Sleepwear • Underwear/base layer • Trousers • Bed linen • Gloves
Not suited for	<ul style="list-style-type: none"> • Multi-layer products (e.g. jacket linings) • Outer fabrics • Products requiring high loading • Shoes 	<ul style="list-style-type: none"> • Multi-layer products (e.g. jacket linings) • Outer fabrics • Products requiring a high loading • Shoes 	<ul style="list-style-type: none"> • Multi-layer products (e.g. jacket linings) • Outer fabrics • Products requiring a high loading • Shoes 	<ul style="list-style-type: none"> • Outer fabrics • Next to skin applications 	<ul style="list-style-type: none"> • Multi-layer products (e.g. jacket linings) • Woven fabrics • Shoes 	<ul style="list-style-type: none"> • Multi-layer products (e.g. jacket linings) • Shoes
Benefits	<ul style="list-style-type: none"> • Drapes well in garments • Quick drying • Available in various staple lengths • Combines well with other fibers • Can be finished with various technologies 	<ul style="list-style-type: none"> • Dyes well with superb fastness • Exceptional resistance to sunlight degradation • Highly resilient with good resistance to abrasion • Quick drying • Acrylic naturally wicks moisture away from the skin 	<ul style="list-style-type: none"> • Softness and comfort similar to cotton or silk • Drapes well in garments • Absorbs moisture • Available in various staple lengths • Natural fiber based on cellulose 	<ul style="list-style-type: none"> • Concentrated levels for higher loading • Versatile (numerous applications in a variety of industries) • Breathable Outlast® thermo-adaptive matrix coating • Cooling effect (material is cool to touch) 	<ul style="list-style-type: none"> • Can be applied to polyester, nylon, cotton or other natural fabrics • Durable through multiple washes • Wicking and wicking durability controlled by base fabric • Does not affect drape of fabric • Can be combined with other technologies (antimicrobials, wicking...) 	<ul style="list-style-type: none"> • Cooling effect • Immediately noticeable • Easy to apply with existing products
Disadvantages	Limited loading	Limited loading	Limited loading	<ul style="list-style-type: none"> • Hand feel stiffer • Higher weight 	Individual development work may be necessary	Limited loading
Procedure	Customer can buy yarns or fabrics from licensed Outlast partners.	Customer can buy yarns or fabrics from licensed Outlast partners.	Customer can buy yarns or fabrics from licensed Outlast partners.	Customer can buy fabrics from Outlast or licensed Outlast partners.	Customer can buy fabrics or MIC treatment on own fabrics from Outlast.	Customers can buy drums with compound from Outlast.
Care instructions	Washing	Washing and dry cleaning	Washing and dry cleaning	Washing	Washing	Washing
Testing / Certification	DSC	DSC	DSC	DSC	DSC	DSC